



Printed on 50% post consumer waste (PCW)  
fiber manufactured using wind power.

[interface.com](https://www.interface.com)

**United States Headquarters**  
1280 West Peachtree Street NW  
Atlanta, GA 30309  
1.800.634.6032

**Canadian Headquarters**  
233 Lahr Drive  
Belleville, ON K8N 5S2  
1.800.267.2149 ext. 52128

CIM# IFS00927 06/2023



Climate change is undeniable. And  
reversible. Our mission is to prove it.  
**Join the #ClimateTakeBack and  
help create a climate fit for life.**

# Lost Palms Collection

Cap Rock  
Desert Ranch  
Desert Veins  
Jumbo Rock  
Keys View  
Ribbon Rock

**FLOR**  
Desert Tree  
Valley View  
Yucca Tree

**Interface®**



Lost Palms™ Collection

Invite the rugged, southwestern frontier indoors.

The naturally occurring patterns in the Joshua trees, giant rock formations and cracked stones of the southwestern desert landscape soothe and comfort. These organic designs and textures inspire Interface's Lost Palms™ Collection, and feature biophilic motifs intentionally designed at a larger scale (1 m x 1 m and 50 cm x 1 m) to mimic the grandeur of this iconic terrain.

With nine products in the Lost Palms Collection, the five foundational stone-inspired styles come in colorways of classic cool and warm grays. Jumbo Rock™, Cap Rock™ and Keys View™ styles provide a smoother, lower profile that channels the less-rugged formations polished by erosion. Texture and cracks begin to show through Desert Veins™, while Ribbon Rock™ unearths the most depth with its super-plush pile and clear marbling. Accent product Desert Ranch™ ushers in a classic, southwest vibe, shifting the color palette into earthier tones. Yucca Tree™, Valley View™ and Desert Tree™, found within our specialty FLOR brand, bring mid-century into the moment for a modern, Palm Springs aesthetic featuring terra cotta, olives, light browns and dusty blues.

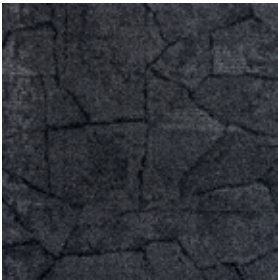
No stranger to innovation, Interface carpet tile has the lowest carbon footprint in the commercial flooring industry—before any offsets. And like all Interface products, the Lost Palms Collection is third party verified carbon neutral across the full product life cycle through our Carbon Neutral Floors™ program.



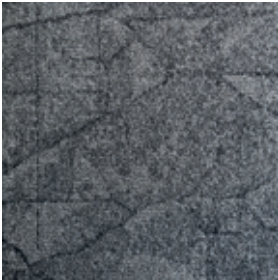




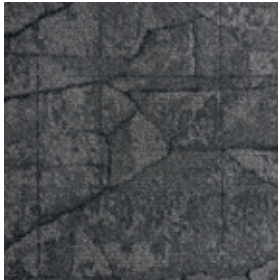
Cap Rock™ Color Range



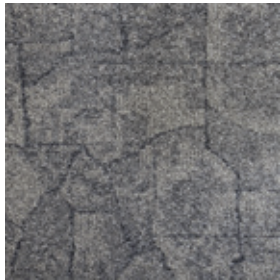
108122 EBONY



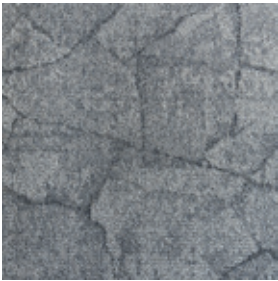
108123 FLANNEL



108124 CHARCOAL



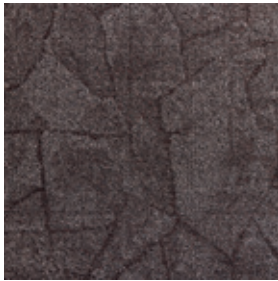
108125 NATURAL



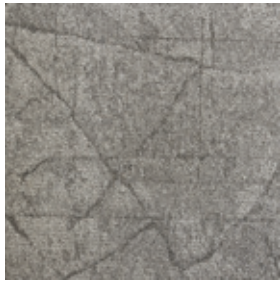
108126 MIST



108127 SHELL



108128 BROWN



108129 OAT

Specifications

Modular, 1 m x 1 m	13134
Yarn Manufacturer	Aquafil
Yarn System	100% Recycled Content Nylon
Dye Method	100% Solution Dyed
Construction	Tufted Textured Loop
Preservative Protection	Intersept®
Soil/Stain Protection	Protekt <sup>2</sup> ®
Pile Thickness	0.118 in, 3.0 mm
Pile Density	6,102 oz/yd <sup>3</sup>
Total Recycled Content	Up to 83%
Indoor Air Quality	CRI Green Label Plus #GLP0820

View the full product specification on [interface.com](#)

Installation Method



MONOLITHIC



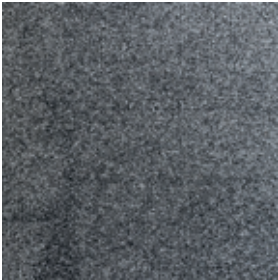
BROWSE IMAGES  
ORDER SAMPLES



Jumbo Rock™ Color Range



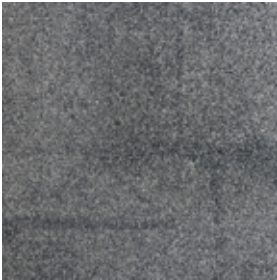
108114 EBONY



108115 FLANNEL



108116 CHARCOAL



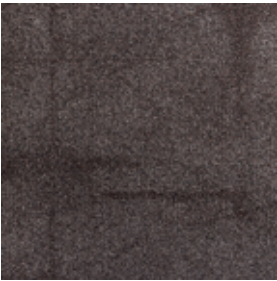
108117 NATURAL



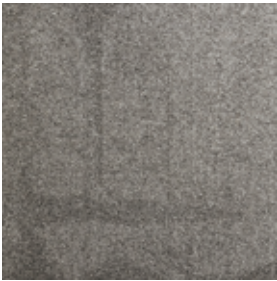
108118 MIST



108119 SHELL



108120 BROWN



108121 OAT

Specifications

Modular, 1 m x 1 m	13133
Yarn Manufacturer	Aquafil
Yarn System	100% Recycled Content Nylon
Dye Method	100% Solution Dyed
Construction	Tufted Textured Loop
Preservative Protection	Intersept®
Soil/Stain Protection	Protekt <sup>2</sup> ®
Pile Thickness	0.089 in, 3.1 mm
Pile Density	7,281 oz/yd <sup>3</sup>
Total Recycled Content	Up to 83%
Indoor Air Quality	CRI Green Label Plus #GLP0820

View the full product specification on [interface.com](#)

Installation Method



MONOLITHIC



**BROWSE IMAGES**  
**ORDER SAMPLES**

**PRODUCT** JUMBO ROCK **COLOR** 108120 BROWN **INSTALLED** MONOLITHIC



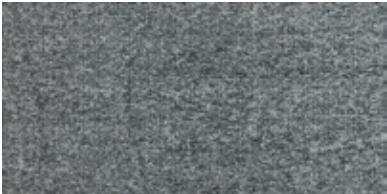




Keys View™ Color Range



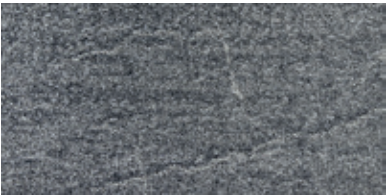
108134 EBONY



108135 FLANNEL



108136 CHARCOAL



108137 NATURAL



108138 MIST



108139 SHELL



108140 BROWN



108141 OAT

Specifications

Modular, 50 cm x 1 m	13135
Yarn Manufacturer	Aquafil
Yarn System	100% Recycled Content Nylon
Dye Method	100% Solution Dyed
Construction	Tufted Textured Loop
Preservative Protection	Intersept®
Soil/Stain Protection	Protekt <sup>2</sup> ®
Pile Thickness	0.098 in, 2.5 mm
Pile Density	6,612 oz/yd <sup>3</sup>
Total Recycled Content	Up to 83%
Indoor Air Quality	CRI Green Label Plus #GLP0820

View the full product specification on [interface.com](#)

Installation Methods



ASHLAR



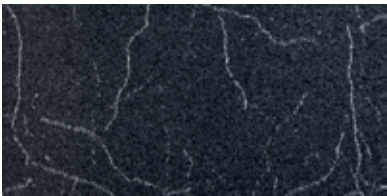
HERRINGBONE



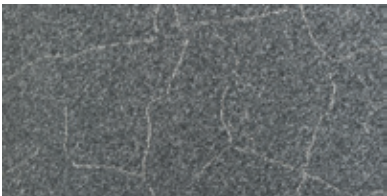
**BROWSE IMAGES**  
**ORDER SAMPLES**



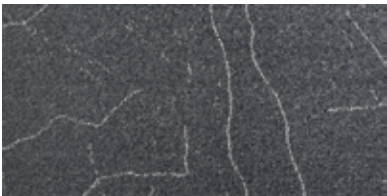
Desert Veins™ Color Range



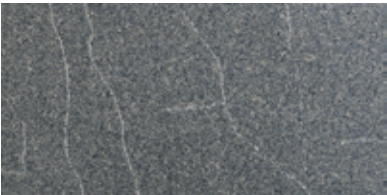
108142 DARK SKY



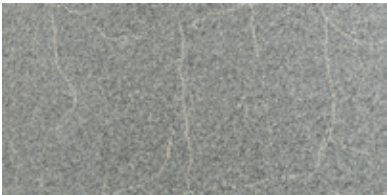
108143 BOULDER



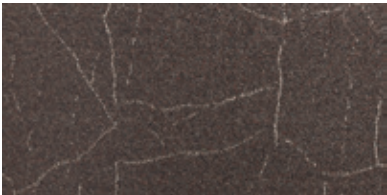
108144 IRONWOOD



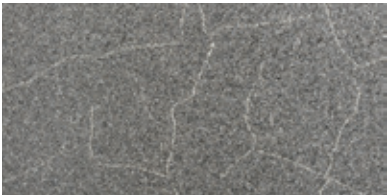
108145 ACACIA



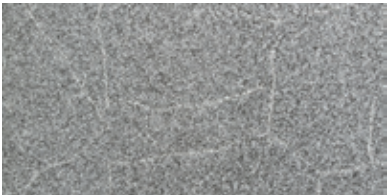
108146 PALM GREY



108148 ADOBE



108149 COTTONWOOD



108162 RIVERBED

Specifications

Modular, 50 cm x 1 m	16829
Yarn Manufacturer	Aquafil
Yarn System	100% Recycled Content Nylon
Dye Method	100% Solution Dyed
Construction	Engaged Tufted Pattern Loop
Preservative Protection	Intersept®
Soil/Stain Protection	Protekt <sup>2</sup> ®
Pile Thickness	0.124 in, 3.1 mm
Pile Density	6,968 oz/yd³
Total Recycled Content	Up to 84%
Indoor Air Quality	CRI Green Label Plus #GLP0820

View the full product specification on [interface.com](#)

Installation Methods



ASHLAR



HERRINGBONE



**BROWSE IMAGES**  
**ORDER SAMPLES**



PRODUCT DESERT VEINS   COLOR 108146 PALM GREY   INSTALLED ASHLAR





## Desert Ranch™ Color Range



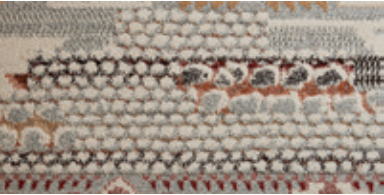
108154 SAGEBRUSH



108155 CACTUS



108156 SANDSTONE



108157 SUNSET

## Specifications

Modular, 50 cm x 1 m	16831
Yarn Manufacturer	Aquafil
Yarn System	100% Recycled Content Nylon
Dye Method	100% Solution Dyed
Construction	Engaged Tufted Pattern Loop
Preservative Protection	Intersept®
Soil/Stain Protection	Protekt <sup>2</sup> ®
Pile Thickness	0.181 in, 4.6 mm
Pile Density	6,564 oz/yd <sup>3</sup>
Total Recycled Content	72%
Indoor Air Quality	CRI Green Label Plus #GLP0820

View the full product specification on [interface.com](#)

## Installation Methods



ASHLAR



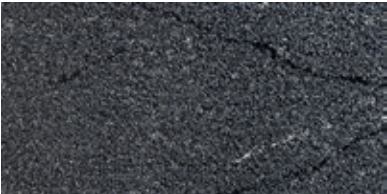
HERRINGBONE



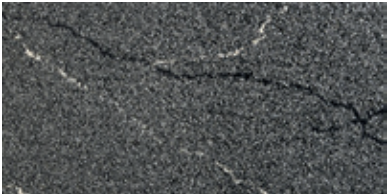
**BROWSE IMAGES**  
**ORDER SAMPLES**



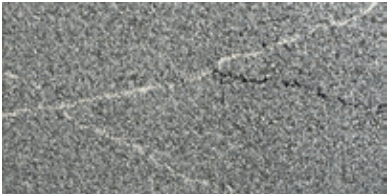
Ribbon Rock™ Color Range



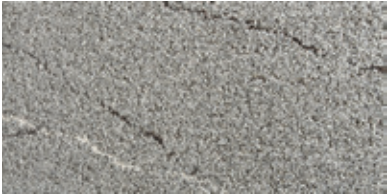
108150 OVERLOOK



108151 VISTA



108152 MESA



108153 CANYON

Specifications

Modular, 50 cm x 1 m	16830
Yarn Manufacturer	Aquafil
Yarn System	100% Recycled Content Nylon
Dye Method	100% Solution Dyed
Construction	Engaged Tufted Pattern Loop
Preservative Protection	Intersept®
Soil/Stain Protection	Protekt <sup>2</sup> ®
Pile Thickness	0.281 in, 7.1 mm
Pile Density	4,612 oz/yd³
Total Recycled Content	Up to 85%
Indoor Air Quality	CRI Green Label Plus #GLP0820

View the full product specification on [interface.com](#)

Installation Methods



ASHLAR



HERRINGBONE



**BROWSE IMAGES**  
**ORDER SAMPLES**

PRODUCT RIBBON ROCK · COLOR 108152 MESA · INSTALLED ASHLAR







## FLOR Yucca Tree™ Color Range



106438 COPPER



106439 TAWNY



106440 CLOVER



106441 SEAFOAM

## Specifications

Modular, 50 cm x 50 cm	16833
Yarn Manufacturer	Aquafil
Yarn System	100% Recycled Content Nylon
Dye Method	100% Solution Dyed
Construction	Engaged Tufted Pattern Loop
Preservative Protection	Intersept®
Soil/Stain Protection	Protekt <sup>2</sup> ®
Pile Thickness	0.140 in, 3.5 mm
Pile Density	7,714 oz/yd <sup>3</sup>
Total Recycled Content	Up to 84%
Indoor Air Quality	CRI Green Label Plus #GLP0820

View the full product specification on FLOR.com.

## Installation Method



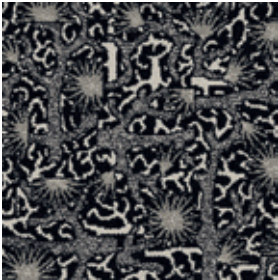
MONOLITHIC



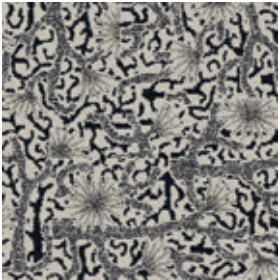
BROWSE IMAGES  
ORDER SAMPLES



FLOR Desert Tree™ Color Range



106436 BLACK/SILVER



106437 BONE/SILVER

Specifications

Modular, 50 cm x 50 cm	16832
Yarn Manufacturer	Aquafil
Yarn System	100% Recycled Content Nylon
Dye Method	100% Solution Dyed
Construction	Engaged Tufted Pattern Loop
Preservative Protection	Intersept®
Soil/Stain Protection	Protekt <sup>2</sup> ®
Pile Thickness	0.130 in, 3.3 mm
Pile Density	8,308 oz/yd <sup>3</sup>
Total Recycled Content	Up to 84%
Indoor Air Quality	CRI Green Label Plus #GLP0820

View the full product specification on FLOR.com.

Installation Method



MONOLITHIC



BROWSE IMAGES  
ORDER SAMPLES



PRODUCT FLOR DESERT TREE COLOR 106436 BLACK/SILVER INSTALLED MONOLITHIC





FLOR Valley View™ Color Range



108158 RUST



108159 COCOA



108160 OLIVE



108161 AGAVE

Specifications

Modular, 50 cm x 50 cm	16834
Yarn Manufacturer	Aquafil
Yarn System	100% Recycled Content Nylon
Dye Method	100% Solution Dyed
Construction	Engaged Tufted Pattern Loop
Preservative Protection	Intersept®
Soil/Stain Protection	Protekt <sup>2</sup> ®
Pile Thickness	0.122 in, 3.1 mm
Pile Density	7,967 oz/yd³
Total Recycled Content	Up to 84%
Indoor Air Quality	CRI Green Label Plus #GLP0820

View the full product specification on FLOR.com.

Installation Method



MONOLITHIC



BROWSE IMAGES  
ORDER SAMPLES



Why Our Modular Flooring?



**Modular Flooring**  
*Performance and flexibility.*  
Interface's standard backing systems set the industry standard for modular performance. Tiles stay on the floor with no upcurl, no tapping and no rippling effect, yet are easy to selectively replace. Our modular carpet is easier to handle than bulky roll carpet and produces an average of just 3-4% waste compared to roll carpet's average of 14%. And it installs seamlessly with our LVT, no transition strips needed.



**TacTiles™**  
*No glue installation.* Our revolutionary TacTiles installation system eliminates the need for glue, adhering tiles securely together to form a floor that “floats” for greater flexibility, easier replacement and long-term performance. The result? Less mess, less waste and virtually no VOCs, not to mention an environmental footprint that is over 90% lower than that of traditional glue adhesives. TacTiles are approved for use on GlasBac™, CQuest™GB, CQuest™ Bio and CQuest™BioX.



**Intersept®**  
*Mold protection.* Our proprietary preservative, Intersept, protects our modular carpet against mold growth and odor-causing bacteria—guaranteed. Intersept treated carpet, with proper maintenance, shows no mold or bacterial growth when tested per the ASTM E2471 Standard Test Method. Intersept is EPA approved for safe use in carpet, water insoluble and contains no halogens, heavy metals, phenols or formaldehyde. Intersept is standard in Interface carpet tile products backed with GlasBac, CQuestGB, ReadyBac™ and CushionBac Renew™.



**ReEntry™**  
*Recyclable.* Through our ReEntry program we reclaim and recycle our carpet tile and Sound Choice™ LVT. ReEntry is the only third party certified recycling system among North American flooring manufacturers.



**Sustainability Transparency**  
Transparency and certified sustainability leadership come standard on Interface products. We enlist outside partners to help us evaluate the entire product lifecycle and reduce the environmental and human health impact of our flooring. And, carpet products made in our US facilities are made with 99% renewable energy.



**Help Lower Your Carbon Footprint**  
Like all the flooring products we sell, Interface carpet tile is carbon neutral across its full product life cycle through our third party verified Carbon Neutral Floors™ program. To find out more, visit [interface.com/carbonneutral](https://interface.com/carbonneutral)

FLOR

FLOR by Interface offers lush textures and bold patterns that are anything but business as usual. FLOR carpet tiles are the perfect design accent for offices, conference rooms and high-profile collaborative spaces – as area rugs or wall-to-wall installations. With all the performance benefits of Interface products, including the 15-year commercial warranty, they'll get the job done for years to come.

📍 Samples

Register and order samples at [interface.com](https://interface.com). Not near a computer? You can also request samples by calling one of the numbers below.

United States  
1.877.605.1500

Canada  
1.866.398.3192

interface.com

- Do more on [interface.com](https://interface.com)
- Browse products and order samples
  - Save and share favorites
  - See images of products in a variety of room scenes
  - Browse floor designs, change colors, upload your own image, download and share
  - Get full specifications, sustainability certifications and more
  - Check order status and inventory availability
  - Sign up to get the latest information on Interface products and news

InterCircle Sample Return

Help us close the loop on the carpet sampling process. Through our InterCircle Sample Return program, sample materials stay out of the landfill and are re-used as samples until it is time to recycle them into new carpet. By reducing sample production material and diverting old materials from the landfill, we can reduce our overall environmental footprint.

Call 1.877.605.1500 (U.S.) or 1.866.398.3192 (Canada) to order a sample return bag with a prepaid return label.

We have tried our very best to accurately represent product colors. However, due to the nature of printed materials, color of actual products may vary slightly. Please request a sample to see actual product color.

All product specifications reflect averages derived from product sample testing, are subject to normal manufacturing and testing tolerances and inherent pattern variances, and may be changed without notice. For more information about these and other important attributes of the product(s) described herein, including recycled content and product warranty information, please see [interface.com/disclaimer](https://interface.com/disclaimer).



**Environmental Product Declaration (EPD) –**  
A statement of product ingredients and environmental impacts over the entire life cycle of a product. A comprehensive life cycle assessment (LCA) is performed to ISO standards to develop an EPD, after which both the EPD and LCA must be third party verified.



**Health Product Declaration (HPD) –**  
A transparency tool for evaluating whether a product supports Green Chemistry. As part of our work on Health and Materials, Interface continuously reduces the environmental and health impacts of our products through elimination of materials of concern.



**CRI Green Label Plus –** An independent testing program that identifies carpet and adhesives with very low emissions of VOCs to help improve indoor air quality.



**NSF 140 Sustainable Carpet Assessment –**  
The only carpet sustainability standard in North America that evaluates the environmental impact of carpet for its entire lifecycle.